

The image displays the ATEM software interface, which is used for choreographing dance. The main area is a multi-track timeline with various tracks and automation curves. The tracks are color-coded and labeled as follows:

- One 30 AM (Yellow)
- One 30 AM (Yellow)
- Distant Voices 2 (Light Green)
- Gangsta Lead 3 (Orange)
- Gangsta Lead 3 (Orange)
- Balance Pad (Yellow)
- Balance Pad (Yellow)
- Electromazon (Yellow)
- Electromazon (Yellow)
- Yaaahhs (Light Green)
- Computer Glitch (Light Green)
- Game Klue (Dark Green)
- Emplode-Osc (Dark Green)
- Emplode-Osc (Dark Green)
- Underwater Asgard Pad (Orange)
- ResMover (Light Green)
- ResMover (Light Green)

Each track has a name, a color-coded icon, and a set of controls including 'M', 'S', a volume icon, a 'Level' dropdown, and 'M' and 'X' buttons. Some tracks also have an 'Automation' button. The tracks are arranged in a vertical stack, and the timeline shows various automation curves and levels for each track.

At the bottom of the interface is a control panel with the following elements:

- Zoom controls (minus, plus, and zoom icons)
- Keys: KEYS, GROOVE, Q RECORD, 1/16T, QUANTIZE
- Sync Mode: SYNC MODE, Internal, SEND CLOCK
- Time: 1. 1. 1. 0, 0:00:00:000
- Click Pre: CLICK PRE, 116.000, TAP, 4/4
- Navigation: Left arrow, Right arrow, Stop, Play, DUB, ALT

Two text boxes are overlaid on the interface:

- A box in the upper middle contains the text: **ATEM**
electronics for
choreographed dance
- A box in the lower middle contains the text: **Till MacIvor Meyn**

Atem

Till MacIvor Meyn

Section I

2 3 4 5 6 7 8 9 10 11 12 13 14 15 18

light
drums



A1
"beep
beep"

A1
"beep
beep"

swishing
drums



falling
bells



echo
5ths

17 18 19 20 21 22 23 24 25 26 27 28 29 30 31 32
4/4

drums
change

A2 A3

A4

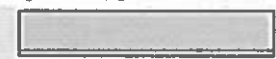
"wah"
synth



"oh"



electronic



synth
bass



low
synth



33 34 35 36 37 38 39 40 41 42 43 44 45 46 47 48
4/4

A series of empty musical staves, including a grand staff (treble and bass clefs) and a piano roll staff, intended for musical notation.

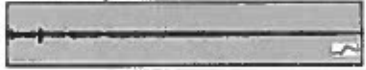
drums



added drums

A1

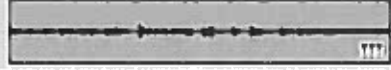
"bi-nay
bi-nay..."



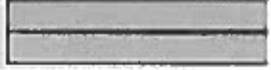
"oh, ji-lo-ba..."



"Ka-la-va-na-si..."



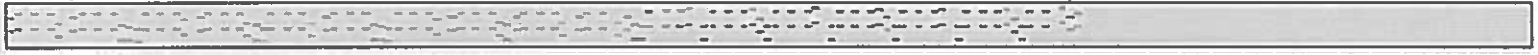
slurred
voice



synth
bass



bass
pattern



falling
pattern



Section II
fades in

49 50 51 52 53 54 55 56 57 58 59 60 61 62 63 64

drums change

A1

beep

A1

beep

A1

beep

A1

beep

A1

A2

"oh"

whirling

electronic

echo shot